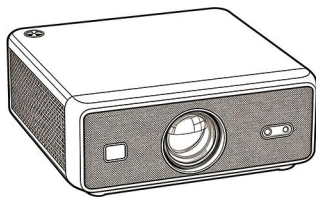


VIDEO PROJECTOR

User Manual



Congratulations On Becoming Of The AUN Projector Family.

Thanks for choosing AUN!

May Your AUN Projector Illuminate Your Life And Bring You An Extraordinary Visual Journey.

Please read this user manual carefully, follow the instructions, and keep it in a safe place for future reference. AUN consistently attaches great importance to product quality and customer satisfaction—feel free to share them with your friends! Should you encounter any issues during use, please do not hesitate to let us know. Our after-sales team will provide you with the best solution promptly. All products purchased from AUN are covered by a 1-year warranty.

You can reach us via the following channels:

E-mail: kp@aunstore.com

WhatsApp: +86 15920076893

Telegram: +86 18124179670



Website

www.aunstore.com



Whatsapp

+86 15920076893

We look forward to bringing you more excellent products in the future.

Kind regards,

AUN Support Team

Packing List



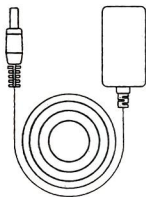
U002 Pro Projector



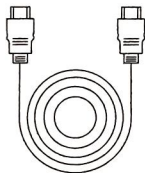
Remote control



User Manual



Power adapter



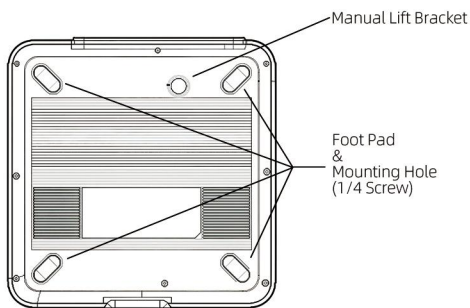
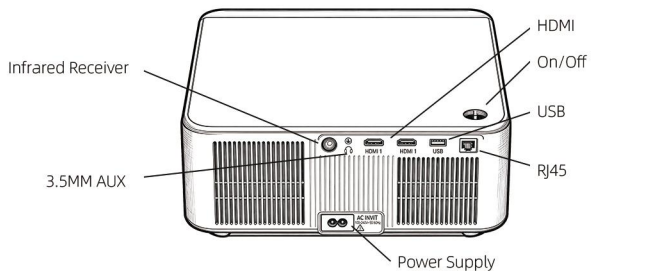
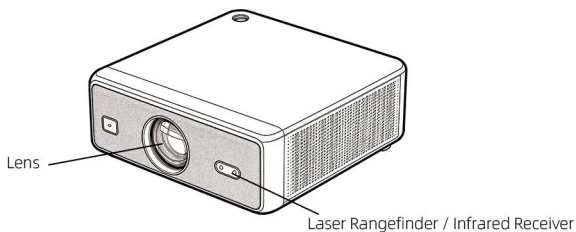
HDMI cable



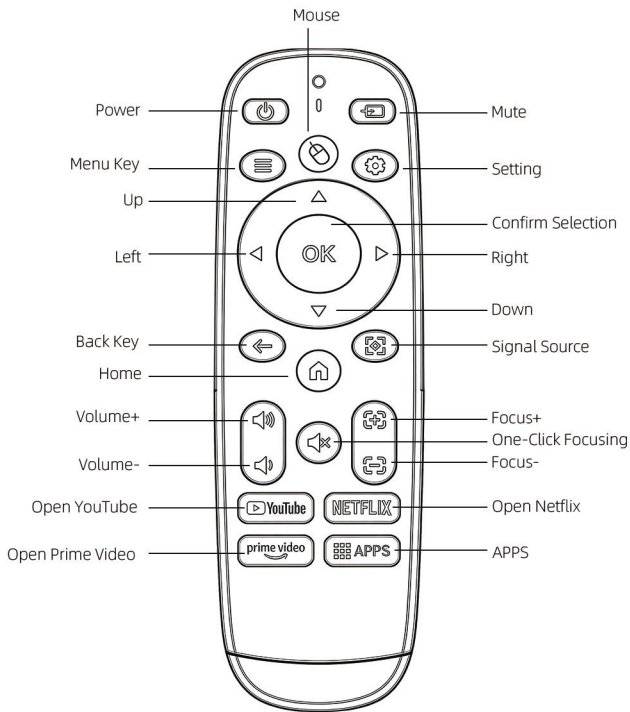
Cleaning cloth

Due to differences in production batches, there may be some variations in the accessories. Please refer to the actual items for details.

Projector Ports and Connection Introduction



Remote Control



Specifications

Item	Details
Model :	U002 Pro
Display Technology :	LCD
Native Resolution :	1920X1080(FULL HD)
System :	Android 13 OS
RAM:	2 G
ROM:	32 Gb
Aspect Ratio :	4:3/16:9
Screen Size :	55"-300" / 4.58 - 25 ft
Projection Distance :	1.54-8.43m / 5.05 - 27.66 ft
3D Function :	Red Blue 3D
Focus :	Electric (Manual & Auto)
Keystone :	Automatic vertical
Input :	HDMI/USB
Input Voltage :	130W±5W
Size :	28.2x27.6x11.5
Weight :	2.3kg
Installation Type :	Front/Rear/Ceiling

Safety Instructions

- Please read these instructions carefully to ensure safe operation of the product.
- Follow these instructions to prevent injury or damage to the product operator or others.

WARNING and CAUTIONS

- **Do not install the projector in poorly ventilated areas.**

Keep the rear of the projector well-ventilated to ensure proper cooling and prevent overheating. Never block the ventilation vents.

- **Avoid installing the projector in dusty or smoky environments.**

Do not place the projector near temperature or smoke sensors, as this may lead to sensor malfunction.

- **Do not expose the projector to direct airflow from heating or air conditioning units**

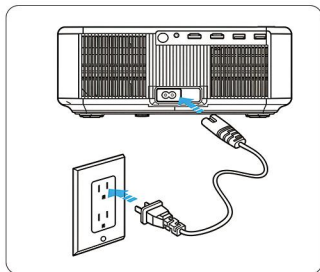
Direct blasts of warm or cool air can cause moisture condensation or temperature fluctuations, resulting in product failure.

- **To reduce the risk of electric shock, do not attempt to disassemble or repair the projector yourself.**

Improper repairs can cause electric shock or personal injury.

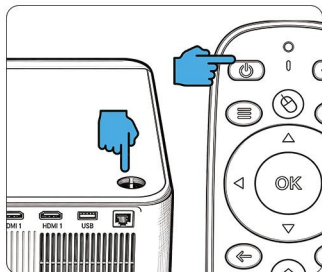
If the product is defective, please contact our after-sales service team at: kp@aunstore.com

Quick Start Guide



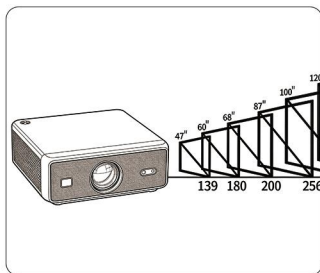
• Power Connection

Connect the projector to a power source using the provided adapter.



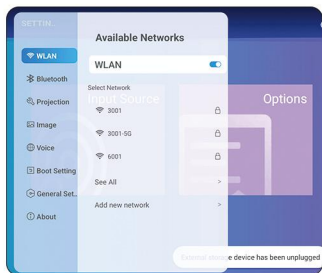
• Power On

Press the power button on the projector to turn it on.



• Quick Focus

Align the device with the screen/wall and the image will auto-correct in moments.



• Connect to WIFI

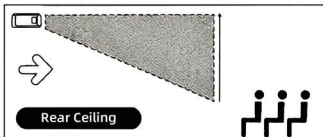
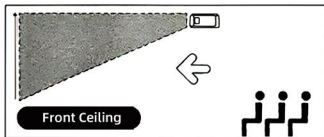
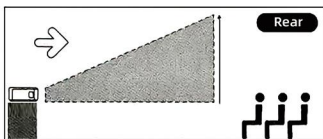
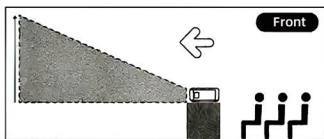
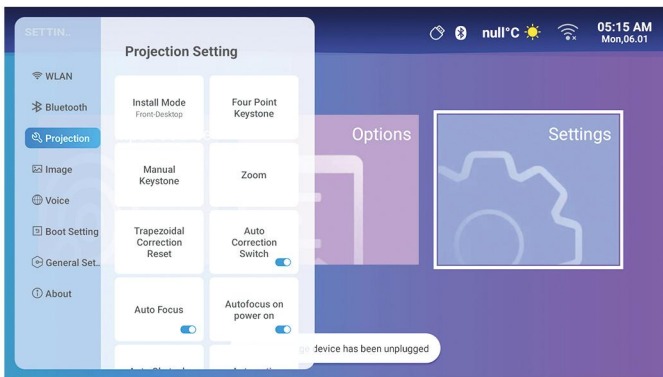
You can now enjoy the giant screen cinema.

Image Adjustment

- Projection Mode

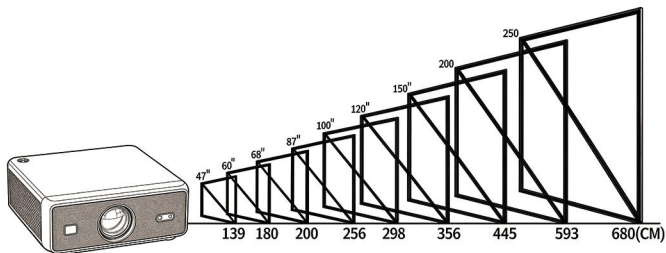
Path: Settings - Projector- Projection Method

Adjust this setting using the OK button on the remote control.



Projection Size

Your projector supports a screen size range of 55"-300". Below are the approximate projection distances for common screen sizes:



Distance (inch)	Picture Size (cm)
55 inches	1.54m
60 inches	1.68m
72 inches	2.02m
84 inches	2.36m
100 inches	2.81m
125 inches	3.51m
150 inches	4.21m
230 inches	6.46m
300 inches	8.43m

Distance (ft)	Picture Size (inches)
4.58	60.63
5	66.14
6	79.53
7	92.91
8.33	110.6
10.42	138.2
12.5	166.7
19.17	254.3
25	331.9

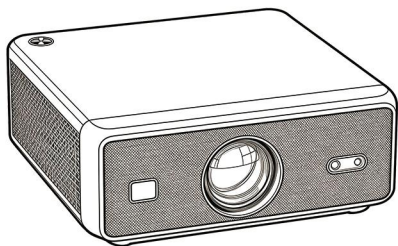
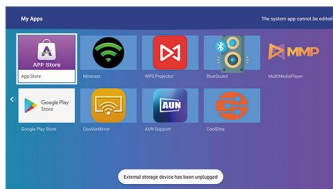
Mobile Phone Mirror Image

- Android Phone

Path: APP - Miracast

Keep your mobile phone and projector connected to the same WIFI network.

In the screen projection function of an Android phone, you can select the projector.



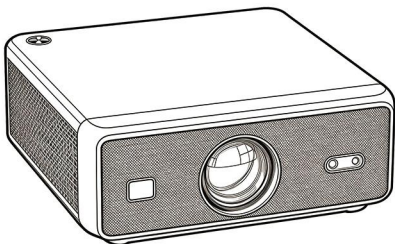
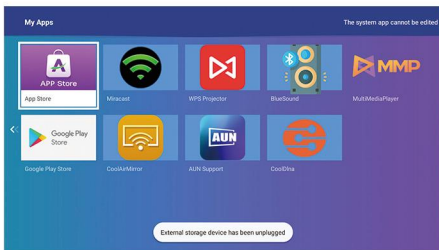
Mobile Phone Mirror Image

• iPhone

Path: APP - CoolAir Mirror

Keep your mobile phone and projector connected to the same WIFI network.

In the screen projection function of an Android phone, you can select the projector.



• Should the issue continue, please contact our support team



Email: kp@aunstore.com



Youtube: [AUNProjector](https://www.youtube.com/AUNProjector)



WhatsApp: +86 15920076893



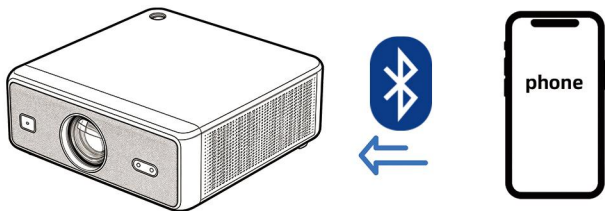
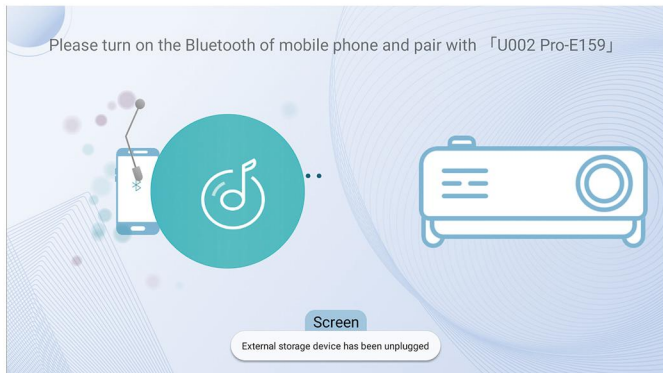
Telegram: +86 18124179670

Bluetooth Input & Output

- Input - Turn Your Projector into a Bluetooth Speaker

Path: APP - BlueTooth Speaker

By connecting the projector to the mobile phone via its Bluetooth input function, the projector will enter the mode of a Bluetooth speaker. You can then play the music from your mobile phone within the projector.

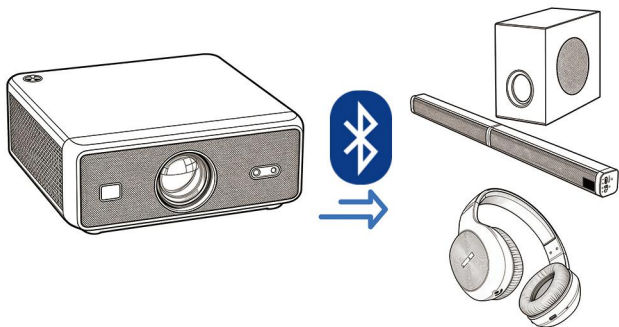
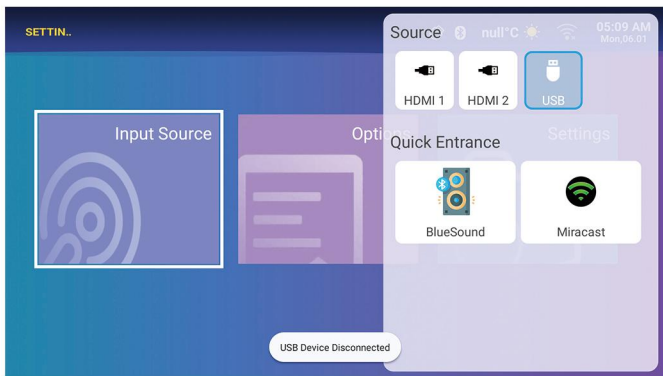


Bluetooth Input & Output

- Output - Transmit the audio to the Bluetooth speaker via Bluetooth.

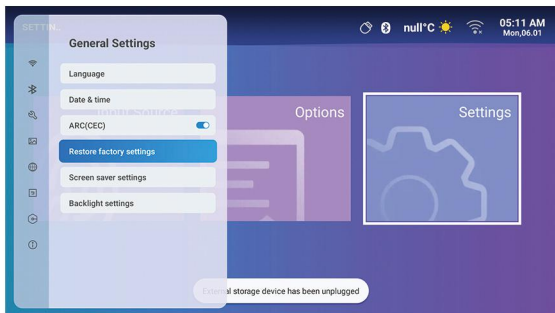
Path: Setting - BlueSound

Here, by connecting Bluetooth speakers, headphones and other Bluetooth input devices, you can receive the audio from the projector. The projector will not be emitting sound at this moment.



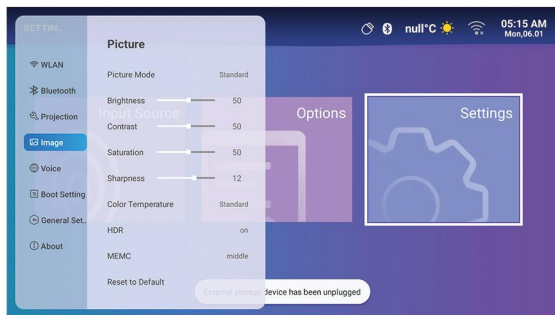
ARC Function Settings

- Use the Remote Control of Projector to Control Apple TV or Amazon Fire Stick
When the projector is connected to an Apple TV or Amazon Fire Stick, the ARC function allows the projector's remote to control the connected device. This provides a more convenient, unified control experience.



- Set Color Mode

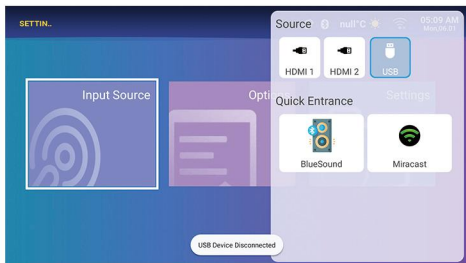
In the Image menu of Settings, you may configure color preferences, toggle HDR on/off, and select MEMC (Motion Compensation) mode.



Select Input Source

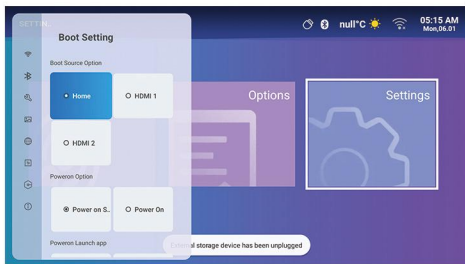
• Method 1.

Go to the Settings menu to find Input Source. Tap the option and select your desired input signal.



• Method 2.

Press the Menu key on the remote control; a menu will pop up on the left side. Select Input Setting



Other Connections

- HDMI Connection

Windows PC: Connect your computer to the projector using a standard HDMI cable.

MacBook: A USB-C to HDMI adapter/cable is required (sold separately).

- USB Media Playback

Load video files onto a USB flash drive and plug it into the projector's

USB port. From the home screen, select [Media] to access and play your content.

Troubleshooting

As a high - tech product, the projector combined with optical, mechanical and electronic components and equipped with a protective and complicated circuit inside.

To quickly solve your problems and to prevent improper using and settings please follow operations below. If your problems or enquiries cannot be eliminated after reading the table, please do not hesitate to contact us.



Website
www.aunstore.com



Whatsapp
+86 15920076893



Email: kp@aunstore.com



Youtube: AUNProjector



WhatsApp: +86 15920076893



Telegram: +86 18124179670

Disposal and Recycling Information

- This symbol indicates that, under local laws and regulations, this product and/or its battery must be disposed of separately from household waste.
- At the end of its service life, please take the product to a designated collection point operated by your local authorities.
- Separate collection and recycling helps conserve natural resources and ensures that materials are processed in a way that safeguards human health and the environment. For details on AUN's recycling program, collection locations, restricted substances, and other environmental efforts, please visit our website at www.aunstore.com



- **EU Compliance Statement**

This product complies with the EMC Directive 2014/30/EU and the Electromagnetic Compatibility Regulations 2016.

- **AUN 's EU Representative:**

78 avenue des Champs Elysees Bureau 326, 75008, Paris, Paris, France

Email: mjcm190928@gmail.com



- **Compliance Notice**

Unauthorized changes or modifications to this product will invalidate AUN's electromagnetic compatibility (EMC) and wireless certifications, and may revoke your right to operate the device.

EU Declaration of Conformity

DECLARATION OF CONFORMITY
WITH BELOW LISTED COMMUNITY LEGISLATION AND HARMONIZED
STANDARDS TO SATISFY THE SAFETY, QUALITY AND REGULATORY
REQUIREMENTS OF THE BELOW SPECIFIED PRODUCT

Item	Details
Manufacturer	Shenzhen Lanbian Technology Co., Ltd.
Address	Building 2, No. 139, Baizhi North Road, Ping'an District, Shenzhen, Guangdong Province, China
Test Standards	EN 301 489-1 V2.2.3 EN 301 489-17 V3.2.4 EN IEC 62368-1:2020+A11:2020 EN IEC 62311 EN 300 328 EN 50665



Warning: Do not look directly into the lens



MJCM SARL
78 avenue des Champs Elysees Bureau 326, PARIS, FR
mjcm190928@gmail.com

Projector Cleaning and Maintenance



• To ensure optimal viewing experience and extend the product lifespan, please clean the projector regularly.



• If any parts of the projector require replacement, please contact your dealer or our qualified customer service team.



• Before cleaning or performing maintenance on the projector, please turn off the device and unplug the power cord.

Helpful Tips

- For exceptional clarity and optimal performance, it is recommended to operate the projector in a dark environment.
- Please note that the projector will produce fan noise during operation for heat dissipation. This noise will not impact your viewing experience when connected to an external audio device.
- This projector is ideal for home entertainment, including video playback, photo viewing, and gaming.
- To preserve the performance and reliability of the projector, maintain a minimum clearance of 30 cm between the projector and the surrounding walls to ensure proper ventilation.

TECHNICAL SUPPORT OR OTHER! PLEASE CONTACT US!



Website

www.aunstore.com



Whatsapp

+86 15920076893